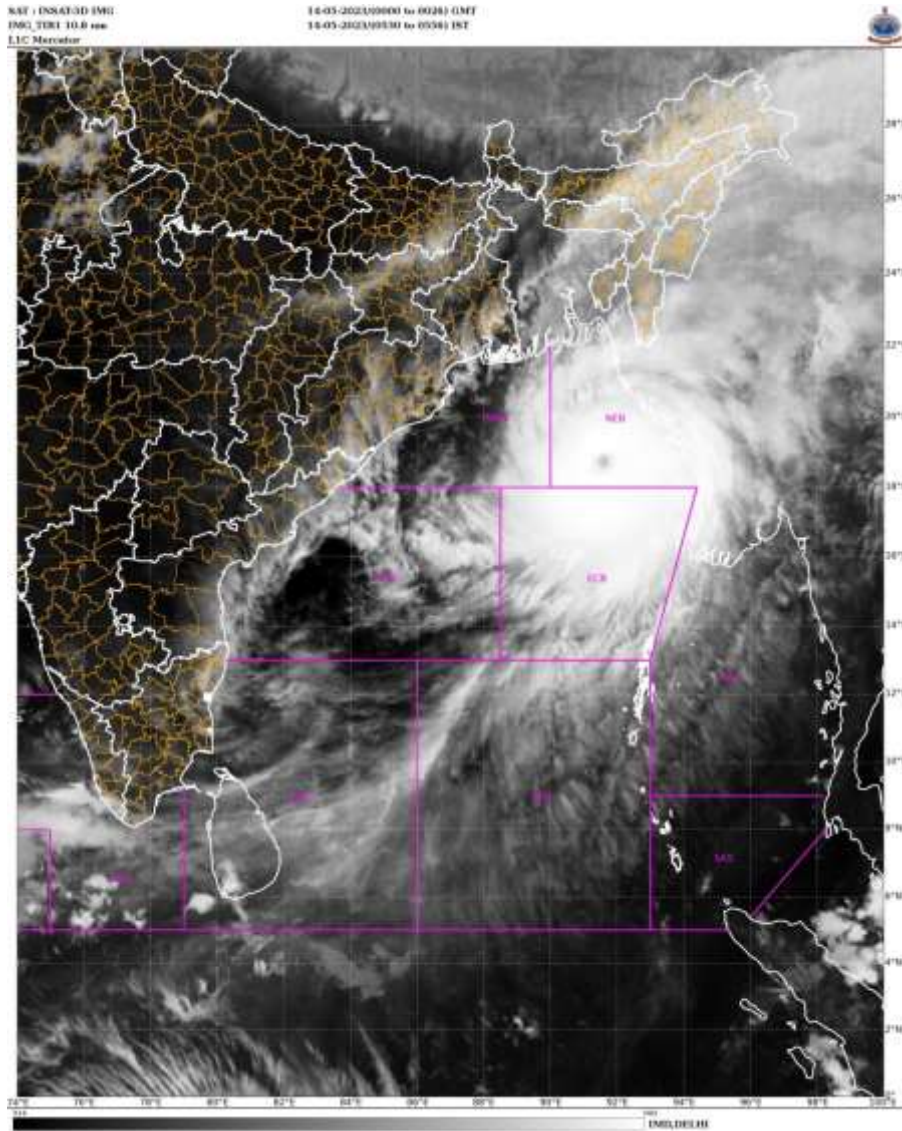


SATELLITE FIX BULLETIN

14.05.2023 TIME 0000 UTC



TCIN50 DEMS 140000

A. TROPICAL DISTURBANCE (MOCHA)

B. 14/0000Z

C. 18.6N

D. 91.6E

E. T6.0/6.0

F. INSAT-3D / 3DR / F17 SSMIS

F. IR / MICROWAVE

G. REMARKS: EYE PATTERN. EYE TEMPERATURE MINUS 18 DEG CEL AND EYE DIAMETER IS 35 KM. MICROWAVE IMAGERY AT 0027 SHOWS CLEAR AND CIRCULAR EYE NEAR 18.6N / 91.6E SURROUNDED BY INTENSE CONVECTIVE EYE WALL CLOUD. OUTERMOST CLOUD BAND EMBEDDED WITH INTENSE CONVECTIVE CELLS IS SEEN OVER SE BANGLADESH AND NW MYANMAR COAST.

ADDITIONAL POSITION:

2146 UTC F18 SSMIS: 18.2N / 91.1E

0027 UTC F17 SSMIS: 18.6N / 91.6E.

TOO 14/0800 EF =

NNNN